



# BECERİ TEMELLİ SORULAR

## 5. Sınıf İngilizce

### 7. Ünite: Party Time

Read the text, look at the calendar and answer the question.

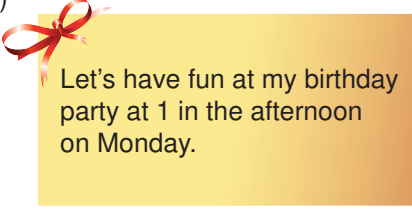
1. Betty's birthday is on the second of tenth month. She wants to organize a party in the afternoon and prepares an invitation card for her friends.

## 2020

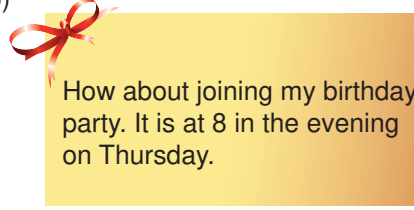
January	February	March	April	May	June
S M T W T F S 1 2 3 4 5 6 7 8 9 10 11 12 13 14 15 16 17 18 19 20 21 22 23 24 25 26 27 28 29 30 31	S M T W T F S 1 2 3 4 5 6 7 8 9 10 11 12 13 14 15 16 17 18 19 20 21 22 23 24 25 26 27 28	S M T W T F S 1 2 3 4 5 6 7 8 9 10 11 12 13 14 15 16 17 18 19 20 21 22 23 24 25 26 27 28 29 30 31	S M T W T F S 1 2 3 4 5 6 7 8 9 10 11 12 13 14 15 16 17 18 19 20 21 22 23 24 25 26 27 28 29 30	S M T W T F S 1 2 3 4 5 6 7 8 9 10 11 12 13 14 15 16 17 18 19 20 21 22 23 24 25 26 27 28 29 30 31	S M T W T F S 1 2 3 4 5 6 7 8 9 10 11 12 13 14 15 16 17 18 19 20 21 22 23 24 25 26 27 28 29 30
July	August	September	October	November	December
S M T W T F S 1 2 3 4 5 6 7 8 9 10 11 12 13 14 15 16 17 18 19 20 21 22 23 24 25 26 27 28 29 30 31	S M T W T F S 1 2 3 4 5 6 7 8 9 10 11 12 13 14 15 16 17 18 19 20 21 22 23 24 25 26 27 28 29 30 31	S M T W T F S 1 2 3 4 5 6 7 8 9 10 11 12 13 14 15 16 17 18 19 20 21 22 23 24 25 26 27 28 29 30	S M T W T F S 1 2 3 4 5 6 7 8 9 10 11 12 13 14 15 16 17 18 19 20 21 22 23 24 25 26 27 28 29 30 31	S M T W T F S 1 2 3 4 5 6 7 8 9 10 11 12 13 14 15 16 17 18 19 20 21 22 23 24 25 26 27 28 29 30	S M T W T F S 1 2 3 4 5 6 7 8 9 10 11 12 13 14 15 16 17 18 19 20 21 22 23 24 25 26 27 28 29 30 31

Which of the following is Betty's card?

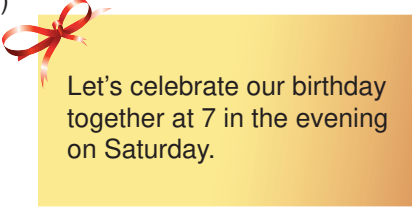
A)



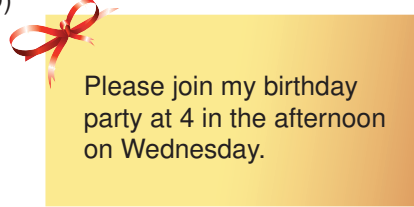
B)



C)



D)

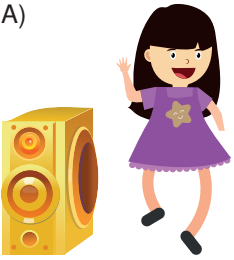


Read the text and answer the question.

2. I am Sally. Today is my birthday. I am opening my gifts now.

Which of the following is Sally?

A)



B)



C)



D)



## 7. Ünite: Party Time

Read the conversation, look at the shopping list and complete the sentence.

3. **Amy** : Mum, you know next Thursday is my birthday. Can I throw a birthday party?

**Mum** : Sure, Amy. Let's make a shopping list.

### Shopping List

- Balloons
- Invitation cards
- Confetti
- Beverages
- Birthday cake

**Amy and her mum do NOT buy - - - .**

A) any music CDs

B) any lemonade

C) a big chocolate cake

D) anything for decoration

Read the text and answer the question.

4. Mary wants to throw a birthday party for her little sister, Elsa. She is preparing an invitation card.

**Which of the following invitation cards does Mary prepare?**

A)

### LET'S CELEBRATE

Elsa's birthday  
She is turning 12.  
Lots of food and beverages  
for everyone. Join us  
on 6 March 2020.

B)

### IT IS PARTY TIME

Summer is coming. Get ready for it.  
Let's meet at school garden at 9  
in the morning on Wednesday.

C)

### PARTY INVITATION

Hey Girls! Take your puzzles and  
music CDs with you. We are  
meeting at Jane's home  
on 21 August.

D)

### PLEASE JOIN THE CELEBRATION

Our Maths teacher's birthday is  
in December. We are throwing  
a surprise birthday party for him.  
at 10.00 on 17 December .

## 7. Ünite: Party Time

Read the text and answer the question.

5.

Susan is my best friend. She is having a birthday party on 5<sup>th</sup> April. She likes watching films but she doesn't like playing chess.



Julia

According to the text above, what should Julia buy Susan as a gift?

A) a puzzle

B) a board game

C) a DVD of "Hachiko"

D) book series of "Harry Potter"

Read the conversation and answer the question.

6.



According to the conversation above which of the following is CORRECT?

A) They want to give a gift to Sam.

B) Sam doesn't like playing chess.

C) They cannot go to Sam's party.

D) Sam enjoys reading books.

## 7. Ünite: Party Time

Read the e-mail and answer the question.

7.

From : Nathalie  
To : Maria  
Subject : Invitation

Hi Maria,  
On Sunday, we are celebrating my sister's birthday. We are having a party at our house at 2 o'clock. We have a birthday cake with chocolate. We play games at the party. There is music. We can dance. Can you join our party?

Nathalie

Which question does NOT have an answer according to the text above?

- A) Where is the party?  
B) What time does the party start?  
C) How old is Nathalie's sister?  
D) What can they do at the party?

Look at the invitation card and answer the question.

8.



Which question does NOT have an answer in the invitation card?

- A) Where is the party?  
B) Can I come with a friend?  
C) When is the event?  
D) Is the party at the weekend?

## 7. Ünite: Party Time

Read the text and answer the question.

9. Tom's friends want to buy a present for his birthday. Tom likes reading books. He enjoys adventures but he doesn't prefer horror. He also enjoys watching movies. Animations are his favourite ones but he finds science fiction movies boring.

According to the information above, which of the following should his friends buy for Tom?

A) 

B) 

C) 

D) 

Read the text, look at the table and answer the question.

10. It's Betty's birthday next week. Betty and her family must do a lot of things before the party.

BETTY'S PARTY PLANS				
4 December	5 December	6 December	7 December	8 December
Go shopping	Order the cake	Make cookies	Clean the room	Decorate the room

Which picture is NOT correct according to the party plans?

A) 

B) 

C) 

D) 

## 7. Ünite: Party Time

Read the text and answer the question.

11. It is my father's birthday tomorrow. We have a party. My mother, Susan, must clean the house. My sister, Elisa, must make cookies. My little brother, Joseph, must take photos. My grandpa, David, must go shopping. My grandma, Lucy, must order the cake.

Which of the following is NOT correct according to the text?

A)



B)



C)



D)



Read the conversation and answer the question.

12.

When is your birthday?

Jane

I want to throw a party.

Chris

I want to invite my friends.

Daniel

It is in April.

Kate

My birthday is at our home.

Tom

Who gives the CORRECT answer to Jane's question?

A) Chris

B) Daniel

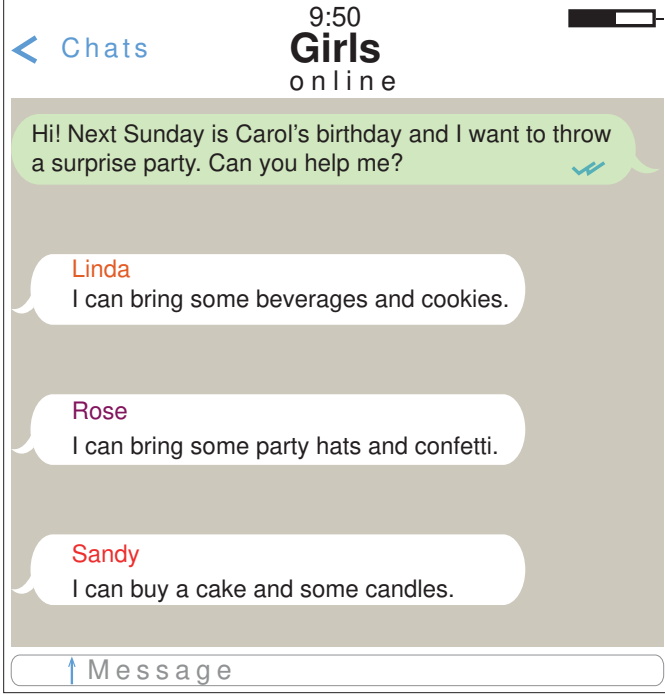
C) Kate

D) Tom

## 7. Ünite: Party Time

Read the conversation and answer the question.

13.



Which of the following is ODD according to the conversation above?

- A) B) C) D)



Read the text and answer the question.

14. **Jamie** : My brother is turning 15 next week. We have a birthday party for him. Would you like to come?

**Terry** : Sure. - - - -?

**Jamie** : It is at the café near our house.

**Terry** : I must buy a gift for him. - - - -?

**Jamie** : No, he doesn't.

**Terry** : - - - -?

**Jamie** : He likes taking photos. You can buy a camera.

Which question does Terry NOT ask Jamie?

- A) Does he like watching films  
B) What time is the party  
C) Where is the party  
D) What does he like

## 7. Ünite: Party Time

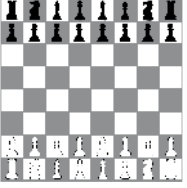
Read the text and answer the question.

15. Some of Joe's friends birthdays are in this month. He makes a list of their likes. Here is the list:

- Samantha likes board games.
- Mike enjoys camping.
- Aeron prefers listening to music.
- Cindy loves taking photos.

Which of the following is NOT suitable for Joe's friends?

A)



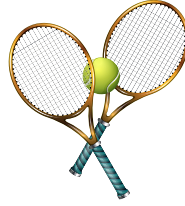
B)



C)



D)



Read the conversation and answer the question.

16.

**Susan** : Hi, Jack. I have a birthday party next week.

**Jack** : Oh, Susan It's great! When is it?

**Susan** : On Wednesday, 20<sup>th</sup> December.

**Jack** : What time is it?

**Susan** : At 3 o'clock in the afternoon.

**Jack** : Where is it?

**Susan** : At my grandpa's garden. Would you like to join?

**Jack** : Sure, but - - - -.

Which of the following completes the conversation?

A) I like birthday parties

B) I must ask my mum

C) it is a bad idea

D) I must attend it

Read the text and answer the question.

17. I am Ellie. I am throwing a surprise birthday party for my mum. I must buy balloons and some confetti to decorate the living room. Then, I must order a birthday cake. I also must buy some beverages and a gift.

What does NOT Ellie need for the party?

A)



B)



C)



D)





## 7. Ünite: Party Time

Read the text, look at the table and answer the questions 18-19.

A teacher throws birthday parties for her students. She asks her students' birthdays and takes notes about their birthdays. Here are her notes:

Number of students												
3	5	2	1	4	2	1	5	6	2	1	—	
Months	January	February	March	April	May	June	July	August	September	October	November	December

18. Which of the following is NOT correct according to the text and the table?

- A) There is no birthday in December.                      B) Birthdays of four students are in May.  
C) There are two birthdays every months.                D) There are thirty-two students in the class.

19. Which of the following is CORRECT?

- A) There are two birthdays in July and March.  
B) There are eleven birthdays in August and September.  
C) The teacher celebrates one birthday every month.  
D) The teacher celebrates twenty nine birthdays in a year.

Look at the invitation card and answer the question.

20.



Which of the following does NOT have an answer in the invitation?

- A) What time is the party?                                      B) When is the party?  
C) Where is the party?    D) What do they serve?



Cevap anahtarına ulaşmak için karekodu okutunuz.